



GMT MONTHLY MEMBERSHIP PROGRESS REPORT

Results as of: 8/31/2019

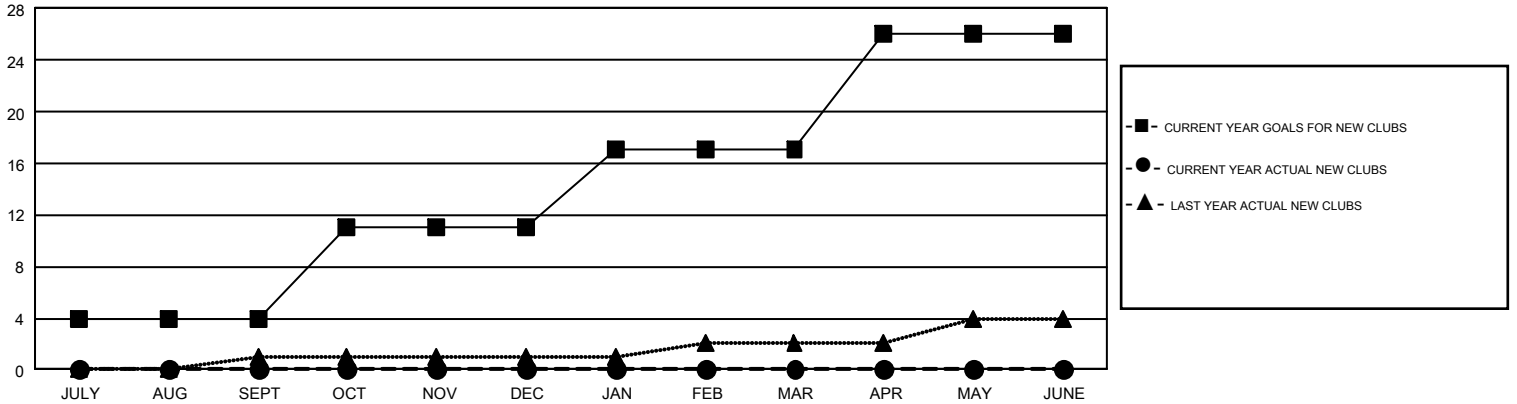
GMT Constitutional Area 1, Group N

GMT: OPEN

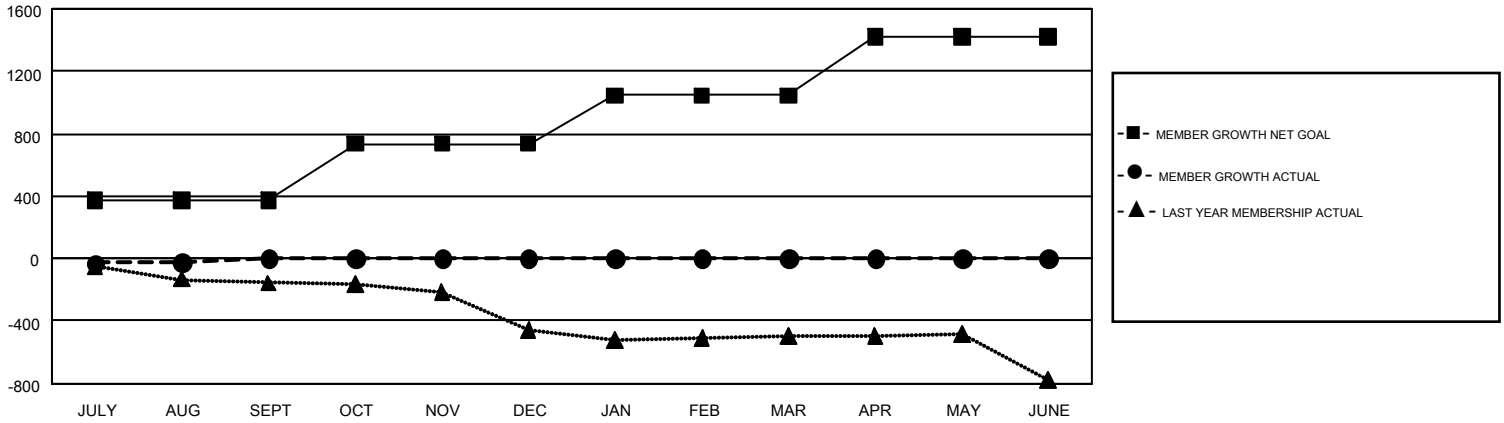
REPORT DOES NOT INCLUDE CLUBS IN UNDISTRICTED AREAS.

Clubs				Members			
RESULTS FOR 2019-2020				RESULTS FOR 2019-2020			
QUARTER	NEW CLUB GOAL	NEW CLUBS	DROPPED CLUBS	QUARTER	MEMBER GROWTH NET GOAL	MEMBER GROWTH ACTUAL	DROPPED MEMBERS ACTUAL (including transfers)
JULY/AUG/SEPT	4	0	1	JULY/AUG/SEPT	371	258	255
OCT/NOV/DEC	7	0	0	OCT/NOV/DEC	365	0	0
JAN/FEB/MAR	6	0	0	JAN/FEB/MAR	311	0	0
APR/MAY/JUNE	9	0	0	APR/MAY/JUNE	374	0	0

GOALS AND ACTUAL NEW CLUBS CUMULATIVE



GOALS AND ACTUAL MEMBERS CUMULATIVE



DROPPED CLUBS: 1	128 CLUBS OF 593 ADDED 1 OR MORE NEW MEMBERS	GENDER DISTRIBUTION MALE 9,291 (66.90%) FEMALE 4,596 (33.10%)
DROPPED MEMBERS DECEASED 31 CLUB CANCELLED 0 OTHER 224 TOTAL 255	CLICK HERE FOR CUMULATIVE MEMBERSHIP DATA	TOTAL FAMILY UNIT MEMBERS 2,653 FAMILY MEMBERS PAYING HALF DUES 1,355